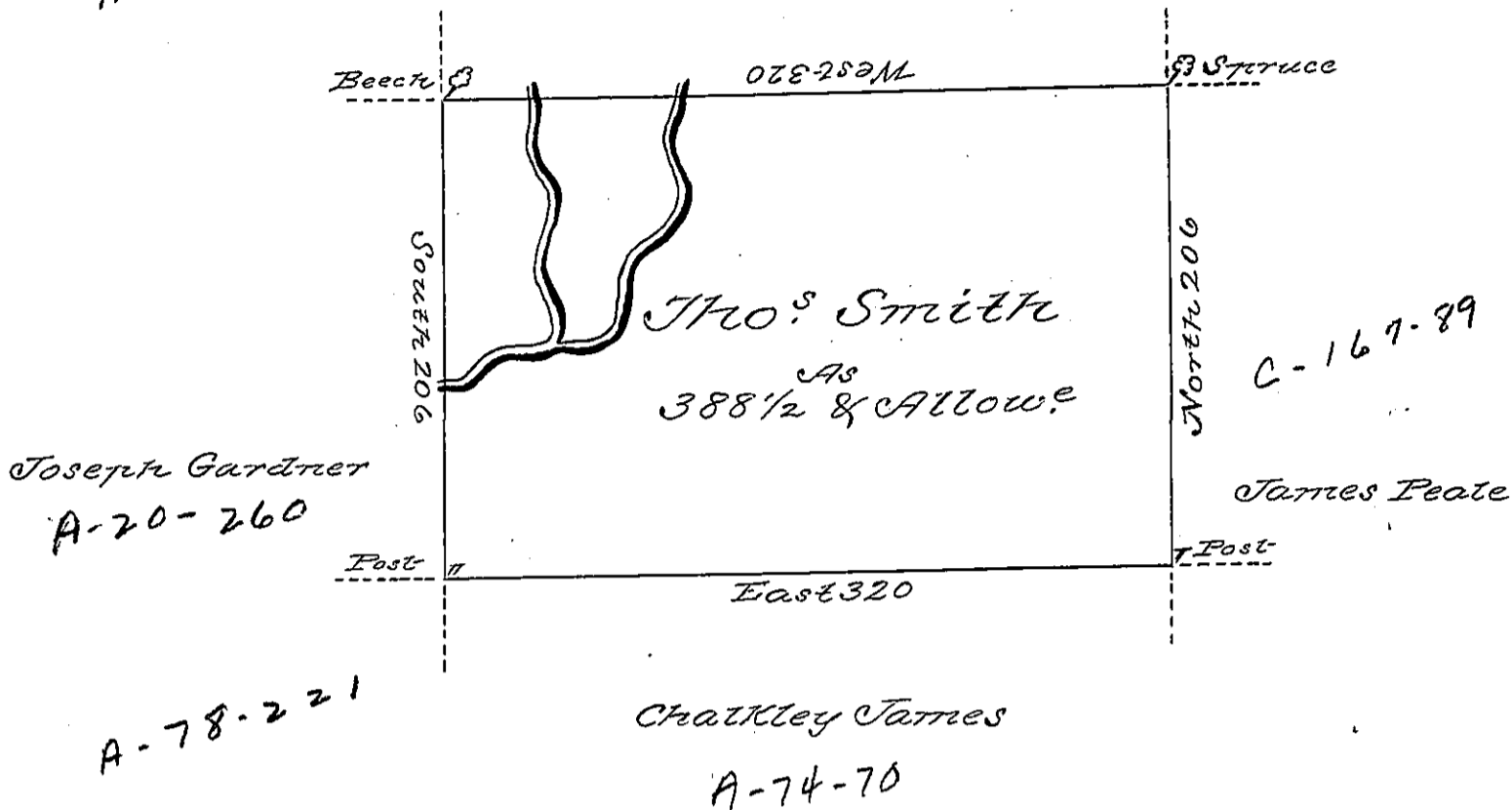


A-28-298

C-104-241
Peter Kurr

A-28-294



A Draught of a tract of land called _____
 Situate on the Waters of Woydusing Creek join-
 ing land of Peter Kurr & others in Luzerne
 (formerly North d.) County containing three
 hundred & Eighty Eight Acres 1/2 & Allow. of six
 Cent for road &c. Survey for Thomas Smith the
 30th Day of August 1787 in Pursuance of a Warrant
 Dated the 27th Day of July 1787 - by
 To John Lukens Esq. } Wm. Gray D. C.
Surv. Genl. }

IN TESTIMONY that the above is a copy of the original remaining on file in the
 Department of Internal Affairs of Pennsylvania, made con-
 formably to an Act of Assembly approved the 16th day of
 February, 1833, I have hereunto set my Hand and caused
 the Seal of said Department to be affixed at Harrisburg, this

Fifth day of October 1897

James Whitten
 Secretary of Internal Affairs.